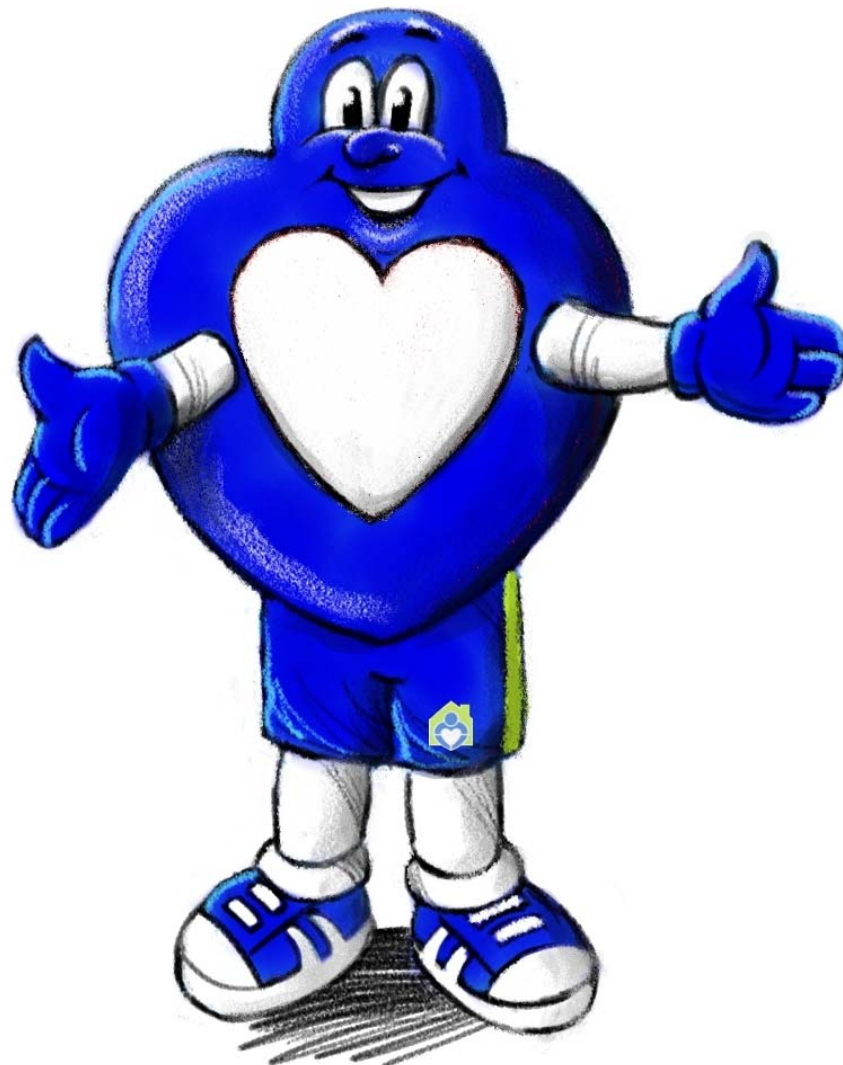


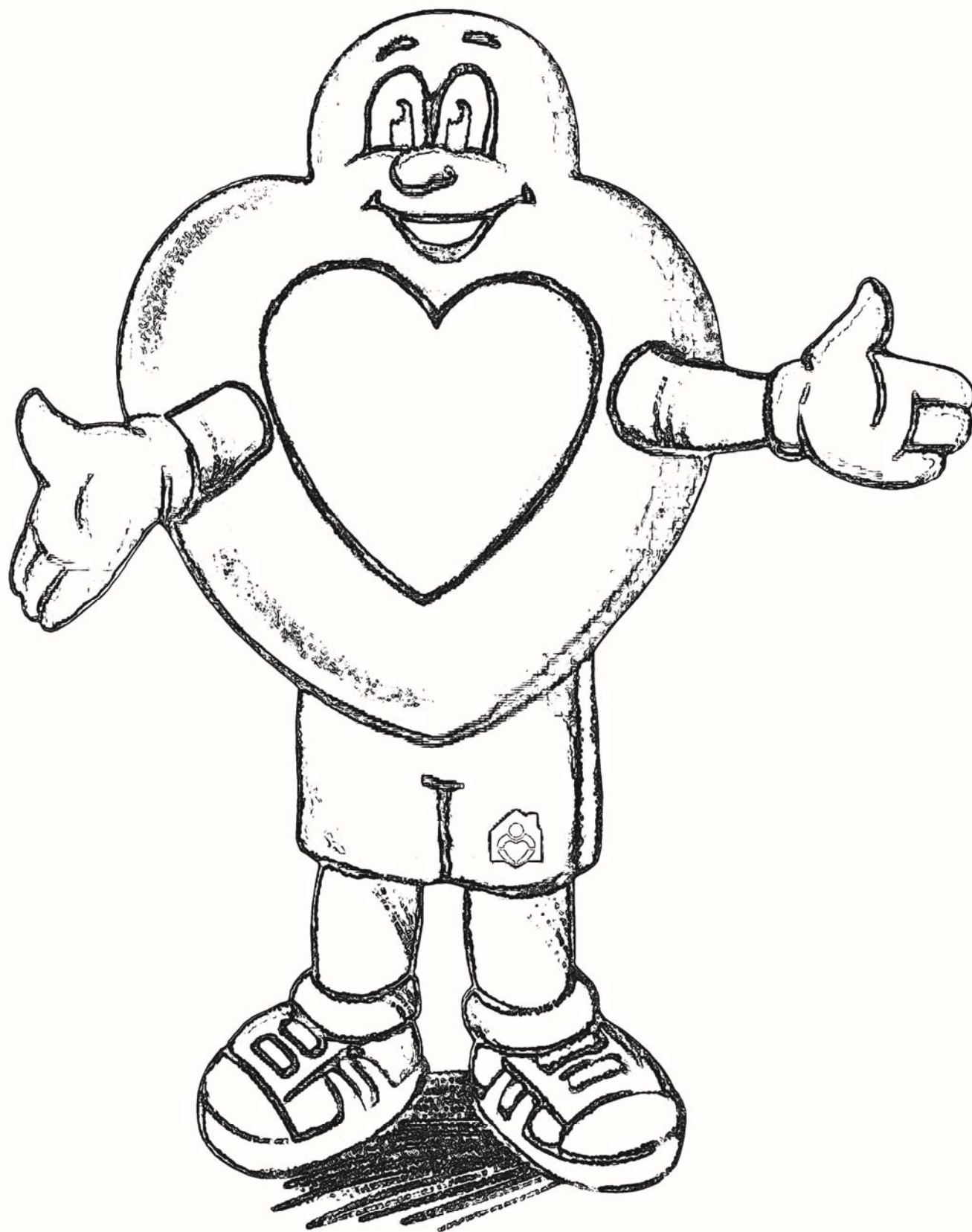


GIFT_{of} LIFE
DONOR PROGRAM

Donate Life Month Activity Book



Color Heartman



Word Search

N B H V J I A D T T H H G E D
H K M A H D I D M I O A H W E
R O E V D R P J K E P S J N D
V E W J V O L U N T E E R N O
T R C I B F A D V O C A T E N
R W X I E U A C M X Z H W K O
A Y J D P S L I X O I X P H R
N U V Z Q I H E D U C A T E F
S U S G B T E O D J M S V A A
P D V X Q N F N U S R L N R M
L A X K B V G S T S C X K T I
A S A J C V S L H G E Y V M L
N H L I V I N G D O N O R A Y
T A B C O M M U N I T Y D N Z
Q K H O N F V V L P X P K D L

Howie's House

Volunteer

Transplant

Donor Family

Recipient

Heartman

Living Donor

Educate

Advocate

Community

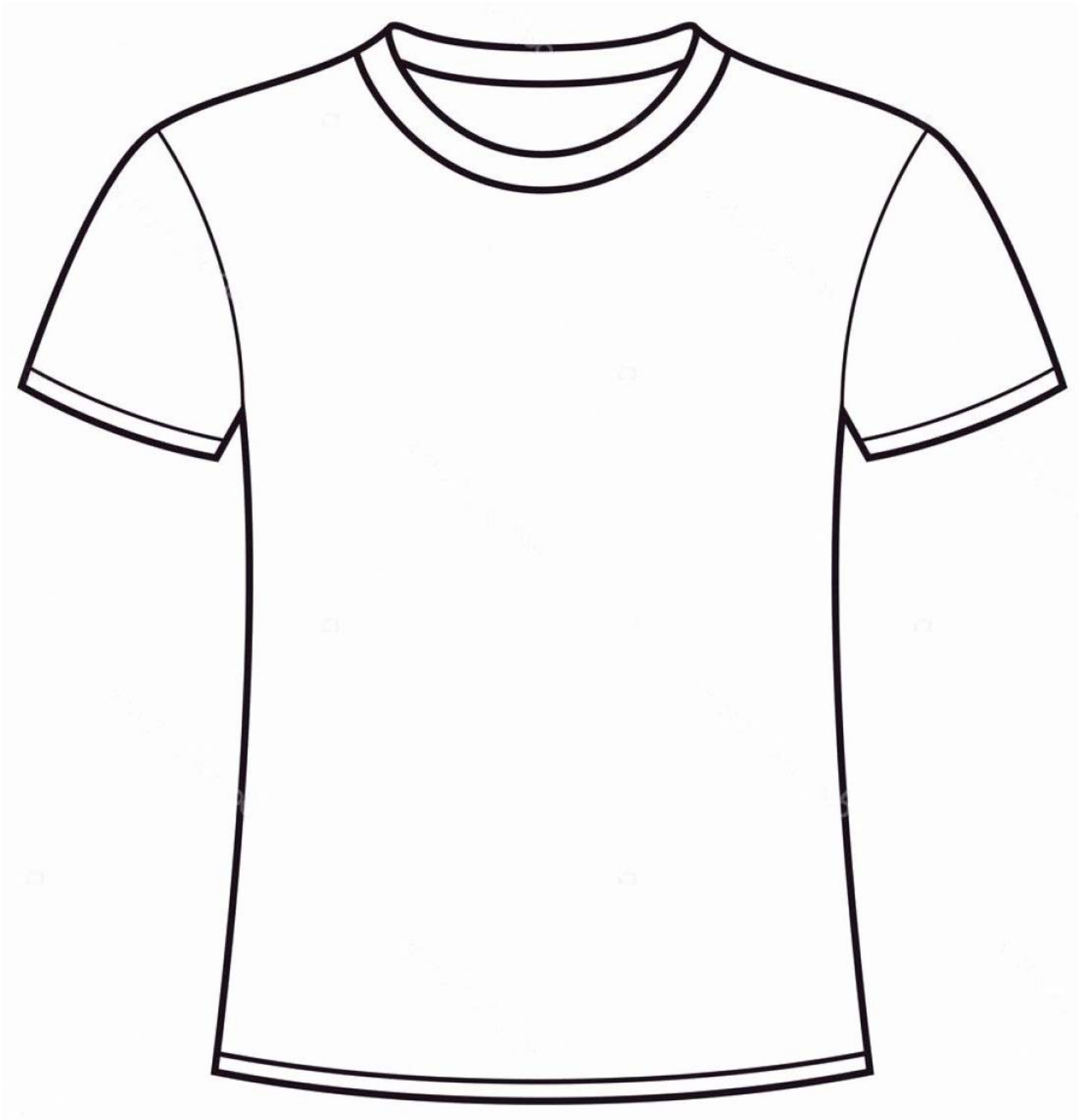
Dash

Hope

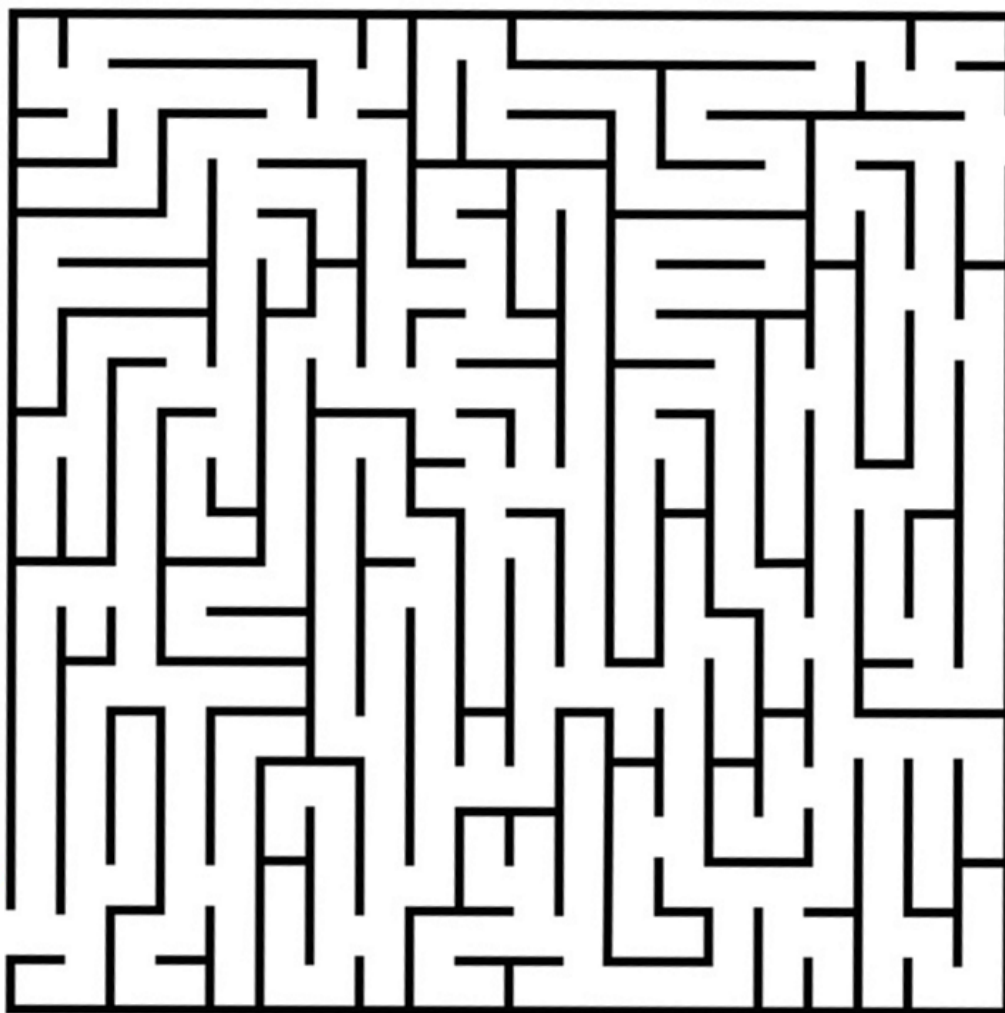


GIFT_{of} LIFE
DONOR PROGRAM

Draw your Donor Dash team t-shirt



Help Heartman get to the Howie's House



GIFT of LIFE
Howie's House



Gift of Life Howie's House serves as a "home away from home" for transplant patients and their families by providing temporary, affordable lodging, and supportive services to those who travel to Philadelphia, Pennsylvania for transplant-related care.

Use the code to finish the sentence

1) Just one organ donor can save up to

_____ lives, and one tissue donor can
 _____ benefit more than
 _____ others.

2) Gift of Life's region is the

_____ half of PA, southern NJ and DE.

3) In 2011, the Gift of Life

_____ , "A home away from home for
 _____ transplant families", opened.

4) Since 1974, Gift of Life has coordinated more than 55,000

organ _____ and approximately two
 _____ life-enhancing tissue transplants.

5) There are over 5,000 men, women and

_____ in our region awaiting a life-saving organ transplant.

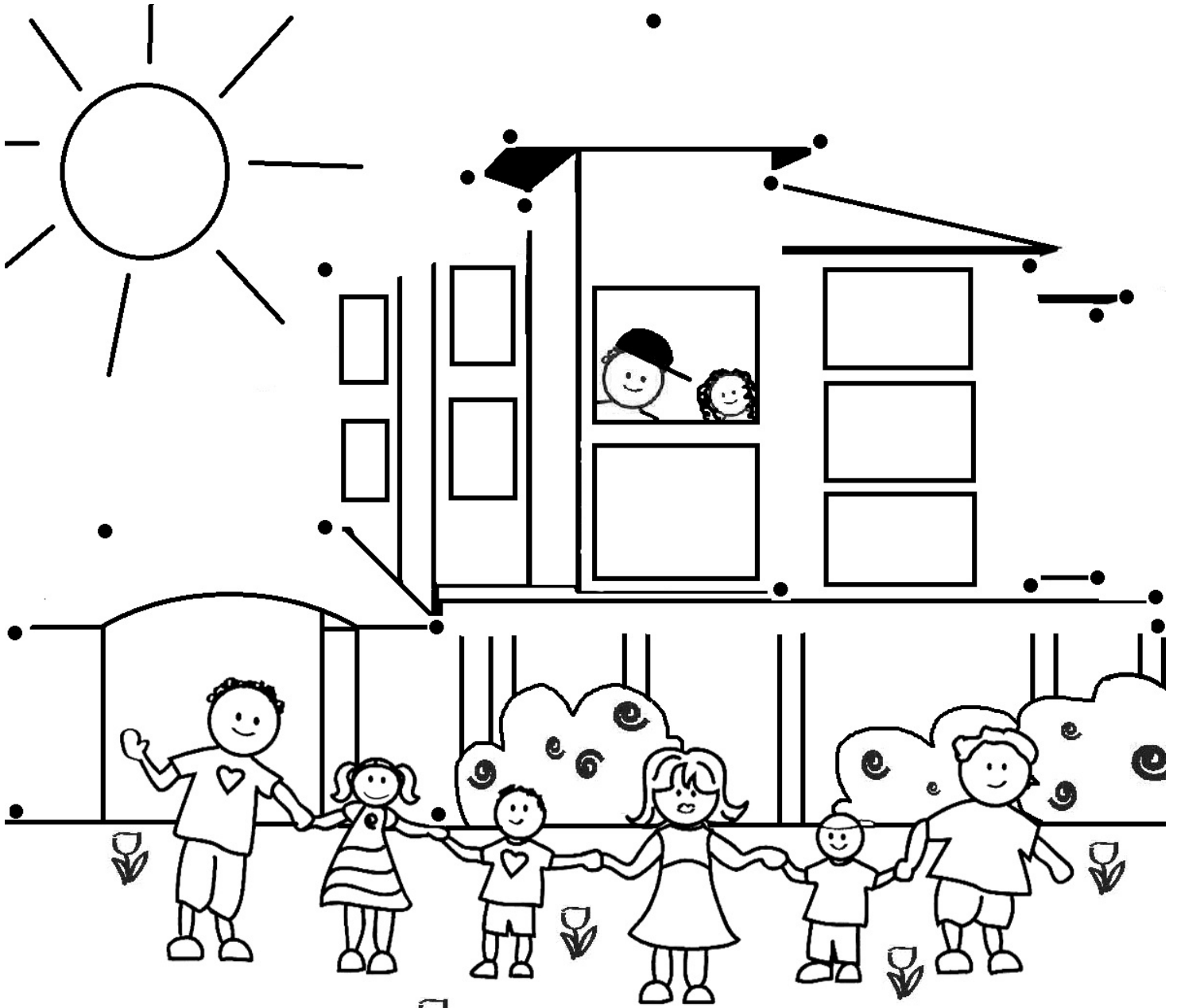
A	★	N	■
B	😊	O	▶
C	⚡	P	↕
D	↓	Q	✕
E	+	R	◆
F	⊘	S	➡
G	▲	T	⬡
H	☾	U	↔
I	↑	V	◯
J	⤿	W	⌘
K	♥	X	↩
L	◀	Y	◈
M	◎	Z	▼

Use the green letters to unscramble a
 BONUS WORD: _ _ _ _ _

Word Scramble

- 1) NDONOTAI _____
- 2) EANSRCAP _____
- 3) NLSANTPART _____
- 4) MNERATAH _____
- 5) TLVNEUORE _____
- 6) RAEHT _____
- 7) IELIALPAHDHP _____
- 8) ELRVI _____
- 9) OIMNUYTMC _____
- 10) ECORAN _____
- 11) IUESTS _____
- 12) ASHD _____
- 13) SULNG _____
- 14) IKENYD _____
- 15) ATFRUGEL _____
- 16) FIMLAY _____
- 17) EAINTP _____
- 18) IAETTGRUD _____

Connect the Dots and Color



GIFT OF LIFE HOWIE'S HOUSE
HELPS FAMILIES ON THEIR
TRANSPLANT JOURNEY

Answers

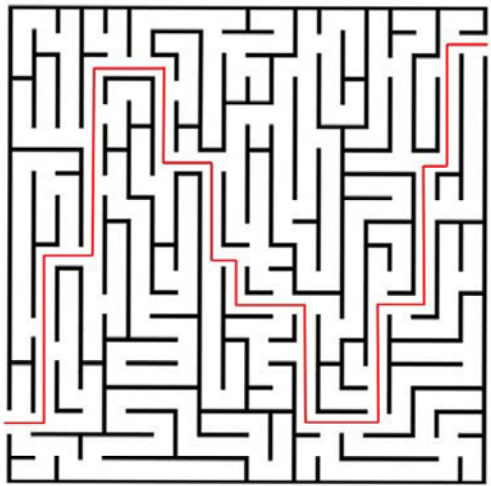
Word Scramble

1) NDOTAI	2) FANSCAP	3) NLSANTPART	4) MNERATAH	5) TLVNEUORE	6) RAHT	7) IELIAPAHDP	8) ELRVI	9) OIMNUVTMC	10) ECORAN	11) IUESTS	12) ASHD	13) SUNLG	14) IKENDY	15) ATRUGEL	16) FIMLAY	17) EAINTP	18) IAETTGRUD
DONATION	PANCREAS	TRANSPLANT	HEARTMAN	VOLUNTEER	HEART	PHILADELPHIA	LIVER	COMMUNITY	CORNEA	TISSUE	DASH	LUNGS	KIDNEY	GRATEFUL	FAMILY	PATIENT	GRATITUDE

Howie's House	Donor Family	Living Donor	Community
Volunteer	Recipient	Educate	Dash
Transplant	Heartman	Advocate	Hope



Word Search



Maze

Use the code to finish the sentence

1) Just one organ donor can save up to **EIGHT** lives, and one tissue donor can benefit more than **ONE HUNDRED** others.

2) Gift of Life's region is the **EASTERN** half of PA, southern NJ and DE.

3) In 2011, the Gift of Life **HOWIES** "A home away from home for transplant families" opened.

4) Since 1974, Gift of Life has coordinated more than 55,000 organ **TRANSPLANTS** and approximately two **MILLION** life-enhancing tissue transplants.

5) There are over 5,000 men, women and **CHILDREN** in our region awaiting a life-saving organ transplant.

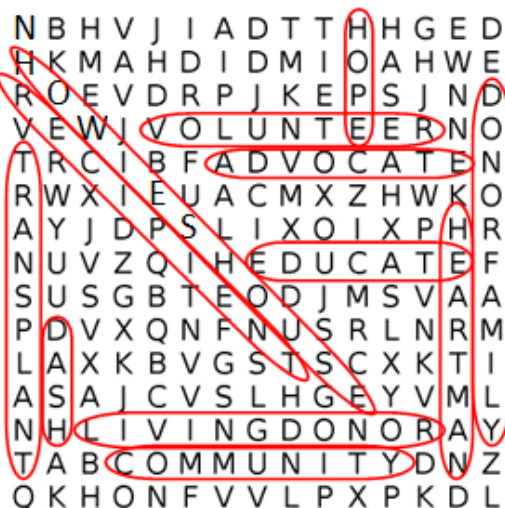
Use the green letters to unscramble a BONUS WORD: **HEARTMAN**



26TH ANNUAL
GIFT OF LIFE
DONOR DASH

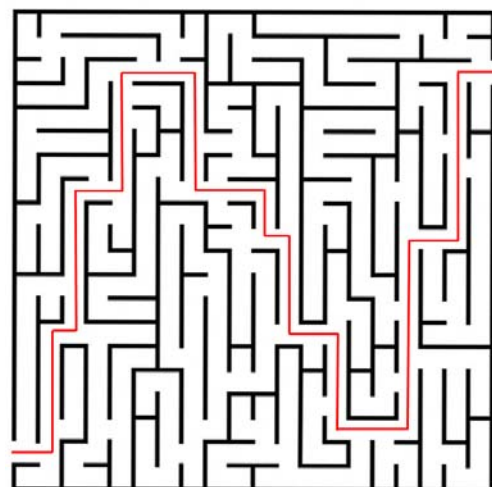


Word Search



Howie's House	Donor Family	Living Donor	Community
Volunteer	Recipient	Educate	Dash
Transplant	Heartman	Advocate	Hope

Maze



Use the code to finish the sentence

1) Just one organ donor can save up to

EIGHT lives, and one tissue donor can

benefit more than ONE HUNDRED others.

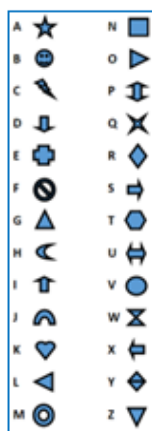
2) Gift of Life's region is the EASTERN half of PA, southern NJ and DE.

3) In 2011, the Gift of Life HOWIE'S HOUSE, "A home away from home for transplant families", opened.

4) Since 1974, Gift of Life has coordinated more than 55,000 organ TRANSPLANTS and approximately two MILLION life-enhancing tissue transplants.

5) There are over 5,000 men, women and CHILDREN in our region awaiting a life-saving organ transplant.

Use the green letters to unscramble a BONUS WORD: HEARTMAN



Word Scramble

- | | | |
|-----|--------------|--------------|
| 1) | NDONOTAI | DONATION |
| 2) | EANSRCAP | PANCREAS |
| 3) | NLSANTPART | TRANSPLANT |
| 4) | MNERATAH | HEARTMAN |
| 5) | TLVNEUORE | VOLUNTEER |
| 6) | RAEHT | HEART |
| 7) | IELIALPAHDHP | PHILADELPHIA |
| 8) | ELRVI | LIVER |
| 9) | OIMNUYTCM | COMMUNITY |
| 10) | ECORAN | CORNEA |
| 11) | IUESTS | TISSUE |
| 12) | ASHD | DASH |
| 13) | SULNG | LUNGS |
| 14) | IKENYD | KIDNEY |
| 15) | ATFRUGEL | GRATEFUL |
| 16) | FIMLAY | FAMILY |
| 17) | EAINTP | PATIENT |
| 18) | IAETTGRUD | GRATITUDE |

Use the code to finish the sentence

1) Just one organ donor can save up to

E I G H T lives, and one tissue donor can



benefit more than O N E H U N D R E D others.



2) Gift of Life's region is the E A S T E R N



half of PA, southern NJ and DE.

3) In 2011, the Gift of Life F A M I L Y



H O U S E, "A home away from home for



transplant families", opened.

4) Since 1974, Gift of Life has coordinated more than 55,000

organ T R A N S P L A N T S and approximately two



M I L L I O N life-enhancing tissue transplants.



5) There are over 5,000 men, women and C H I L D R E N



in our region awaiting a life-saving organ transplant.

A	★	N	■
B	☺	O	▶
C	⚡	P	↕
D	↓	Q	✕
E	+	R	◆
F	⊘	S	➡
G	▲	T	⬡
H	☾	U	↔
I	↑	V	◯
J	∩	W	⌘
K	♥	X	↩
L	◀	Y	◈
M	◎	Z	▼

Use the green letters to unscramble a
BONUS WORD: H E A R T M A N