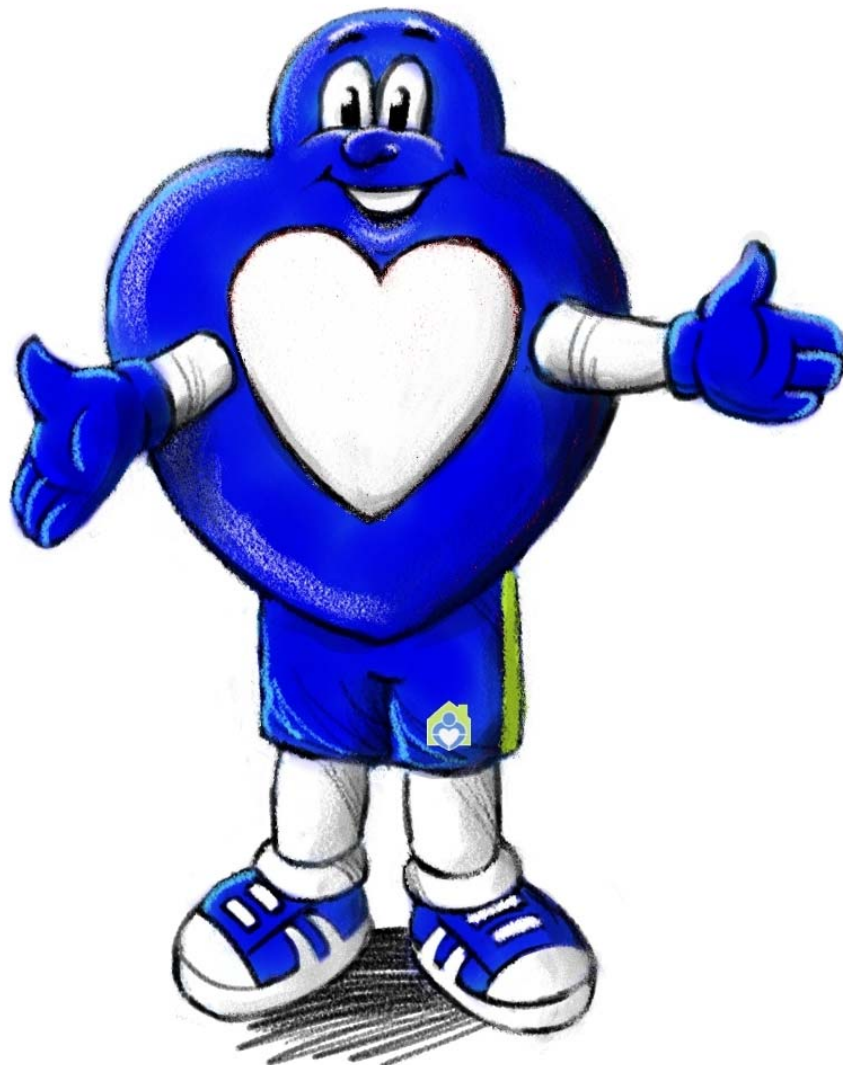




GIFT_{of} LIFE
DONOR PROGRAM

Donate Life Month Activity Book



About Gift of Life Donor Program

Headquartered in Philadelphia, PA, Gift of Life Donor Program is the largest organ procurement organization (OPO) in the United States, serving 11.3 million people across the eastern half of Pennsylvania, southern New Jersey and Delaware. The non-profit, federally-designated OPO is part of the national network, UNOS, the United Network for Organ Sharing. Working in partnership with the 129 acute care hospitals and 14 transplant centers in its designated service area, Gift of Life helps give people a second chance at life. Since 1974, Gift of Life has coordinated more than 55,000 organs for transplantation and more than two million life-enhancing tissue transplants.



The need for more donors is one of this country's critical public health issues. Currently, there are more than 100,000 men, women and children awaiting a life-saving transplant in the United States, with an average of 20 people dying each day waiting for an organ. Just one organ donor can save up to eight lives, and one tissue donor can improve the lives of more than 100 others.

For more information on organ donation or to register, go to www.donors1.org.

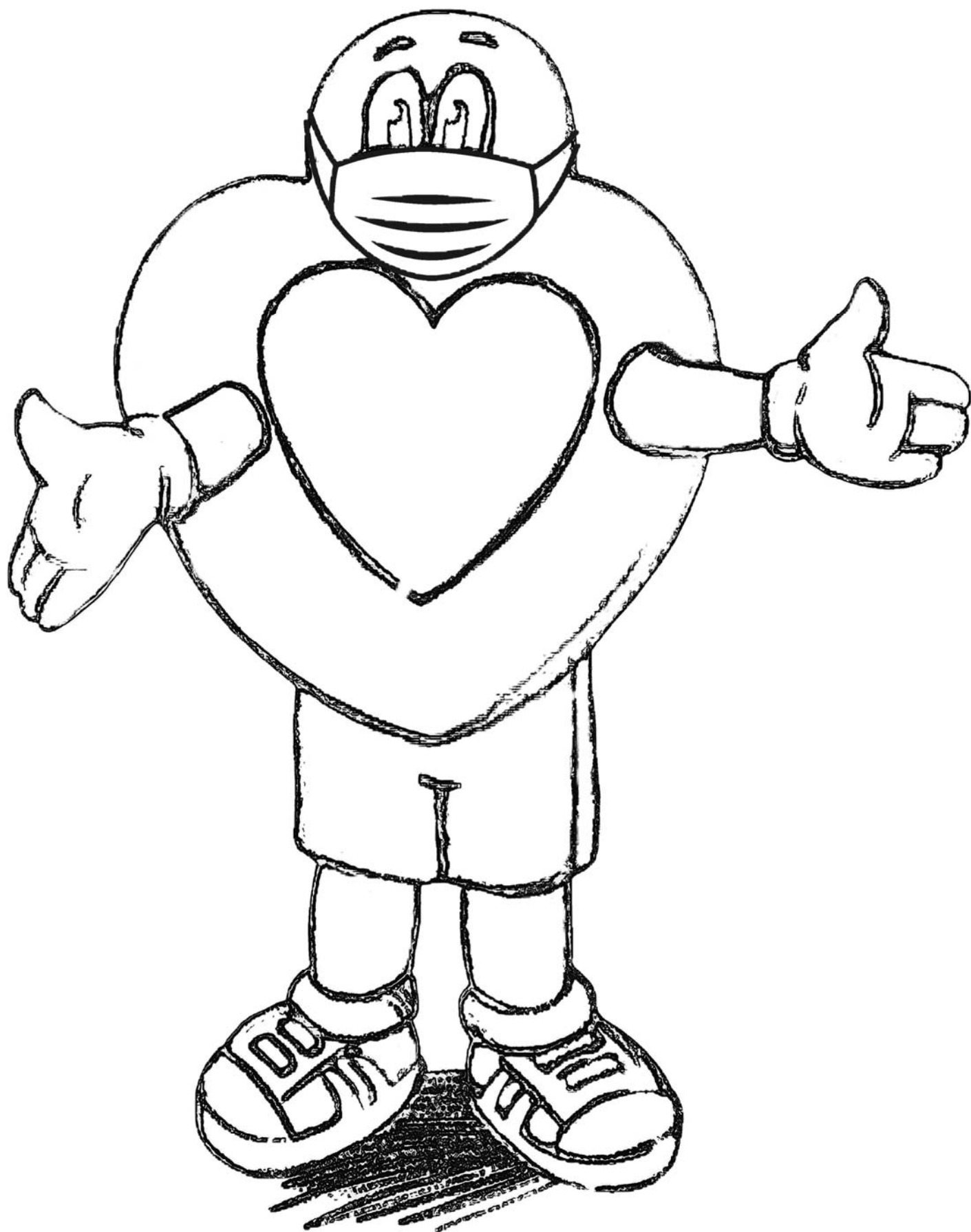
Gift of Life Donor Dash

Taking place in April, Donate Life Month, the Donor Dash is the organizations signature event. Since 1996, a quarter of a million people have attended the Dash and its life-saving message has reached millions through media and community participation. Proceeds from the Dash benefit the Transplant Foundation, the charitable foundation that supports programs and activities for donor and recipient families. These include Team Philadelphia's participation at the Donate Life Transplant Games of America and Gift of Life Family House.

For more information on organ donation or to register, go to www.donordash.org.



Color Heartman



Word Search

N B H V J I A D T T H H G E D
F K M A H D I D M I O A H W E
R A E V D R P J K E P S J N D
V E M J V O L U N T E E R N O
T R C I B F A D V O C A T E N
R W X I L U A C M X Z H W K O
A Y J D P Y L I X O I X P H R
N U V Z Q I H E D U C A T E F
S U S G B T E O D J M S V A A
P D V X Q N F N U S R L N R M
L A X K B V G S T S C X K T I
A S A J C V S L H G E Y V M L
N H L I V I N G D O N O R A Y
T A B C O M M U N I T Y D N Z
Q K H O N F V V L P X P K D L

Family House

Donor Family

Living Donor

Community

Volunteer

Recipient

Educate

Dash

Transplant

Heartman

Advocate

Hope



GIFT_{of} LIFE
DONOR PROGRAM



GIFT of LIFE
DONOR PROGRAM

SAVING LIVES TOGETHER

**NATION'S MOST GENEROUS
COMMUNITY SINCE 2008**

2021

705

**MOST ORGAN DONORS
IN U.S. HISTORY**

1,732

**MOST ORGAN TRANSPLANTS
IN U.S.**

GIFTS OF

HEALING

1,348

MUSCULOSKELETAL DONORS



SIGHT

1,894

CORNEA DONORS



HOME

6,172

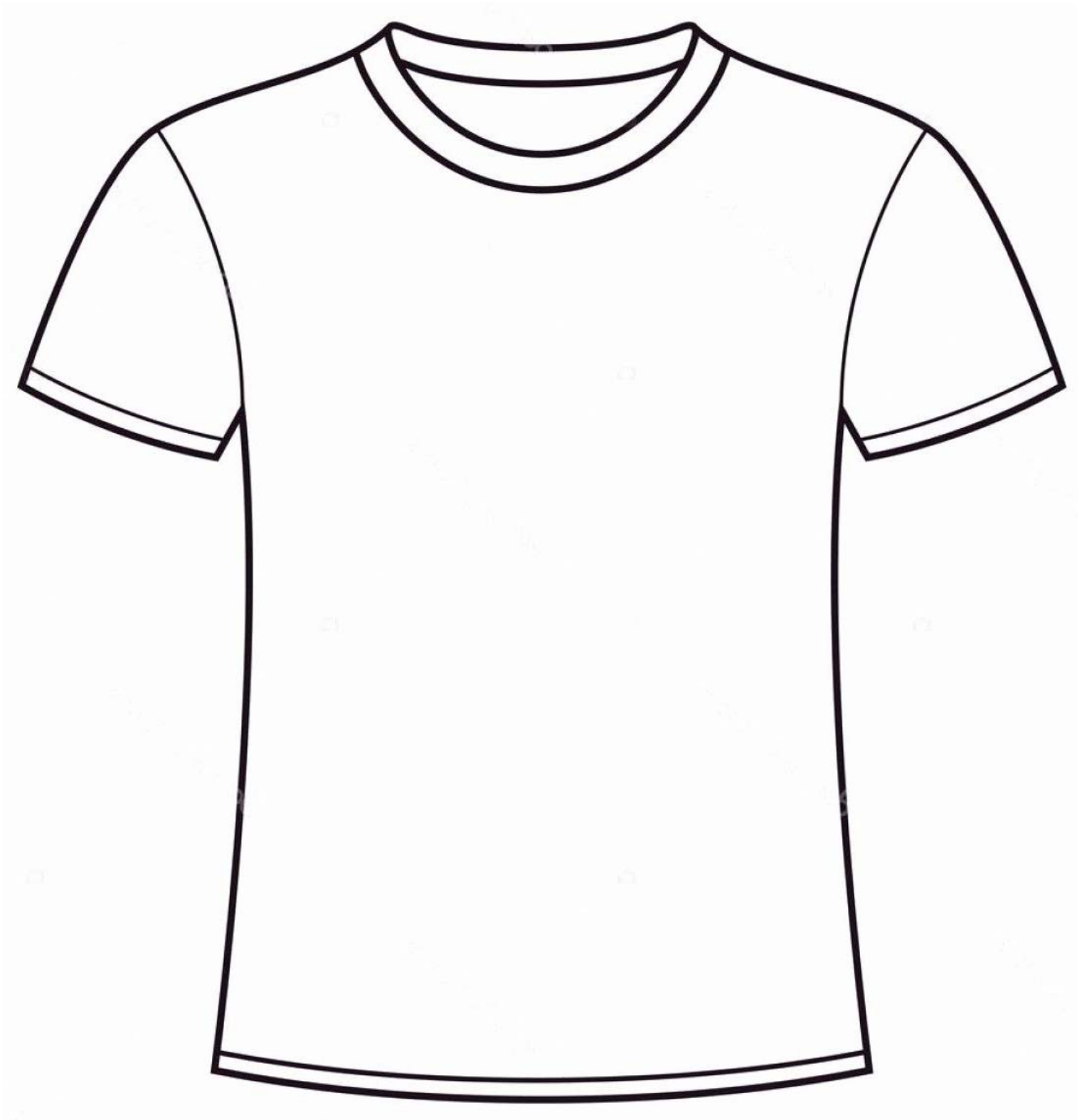
**NIGHTS AT
GIFT OF LIFE FAMILY HOUSE**



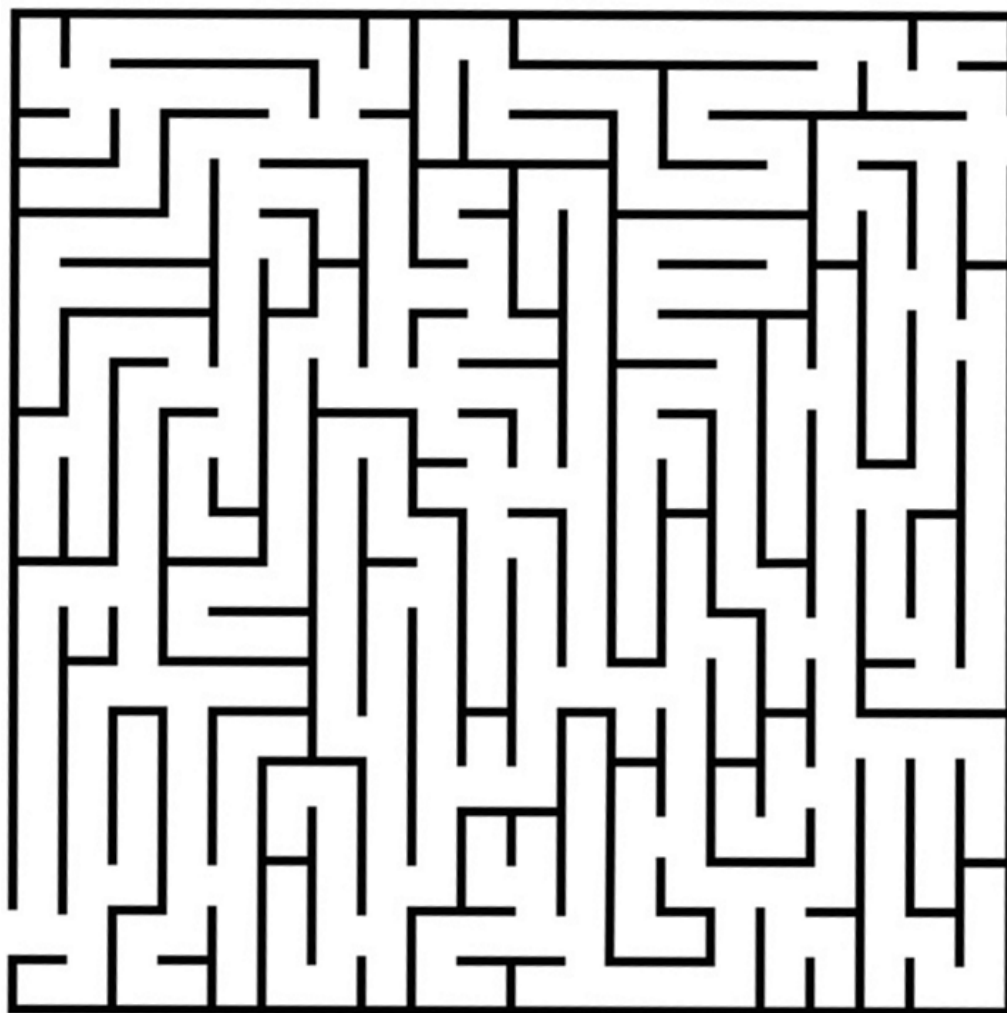
More than 100,000 in U.S. waiting for a life-saving transplant. 20 people die every day. Register now. donors1.org

Gift of Life Donor Program is the non-profit, federally designated organ procurement organization serving the eastern half of PA, southern NJ and DE.

Draw your Donor Dash team t-shirt



Help Heartman get to the Family House



Gift of Life Family House serves as a “home away from home” for transplant patients and their families by providing temporary, affordable lodging, and supportive services to those who travel to Philadelphia, Pennsylvania for transplant-related care.

Use the code to finish the sentence

1) Just one organ donor can save up to

_____ lives, and one tissue donor can
 _____ benefit more than
 _____ others.

2) Gift of Life's region is the

_____ half of PA, southern NJ and DE.

3) In 2011, the Gift of Life

_____ , "A home away from home for
 _____ transplant families", opened.

4) Since 1974, Gift of Life has coordinated more than 55,000

organ _____ and approximately two
 _____ life-enhancing tissue transplants.

5) There are over 5,000 men, women and

_____ in our region awaiting a life-saving organ transplant.

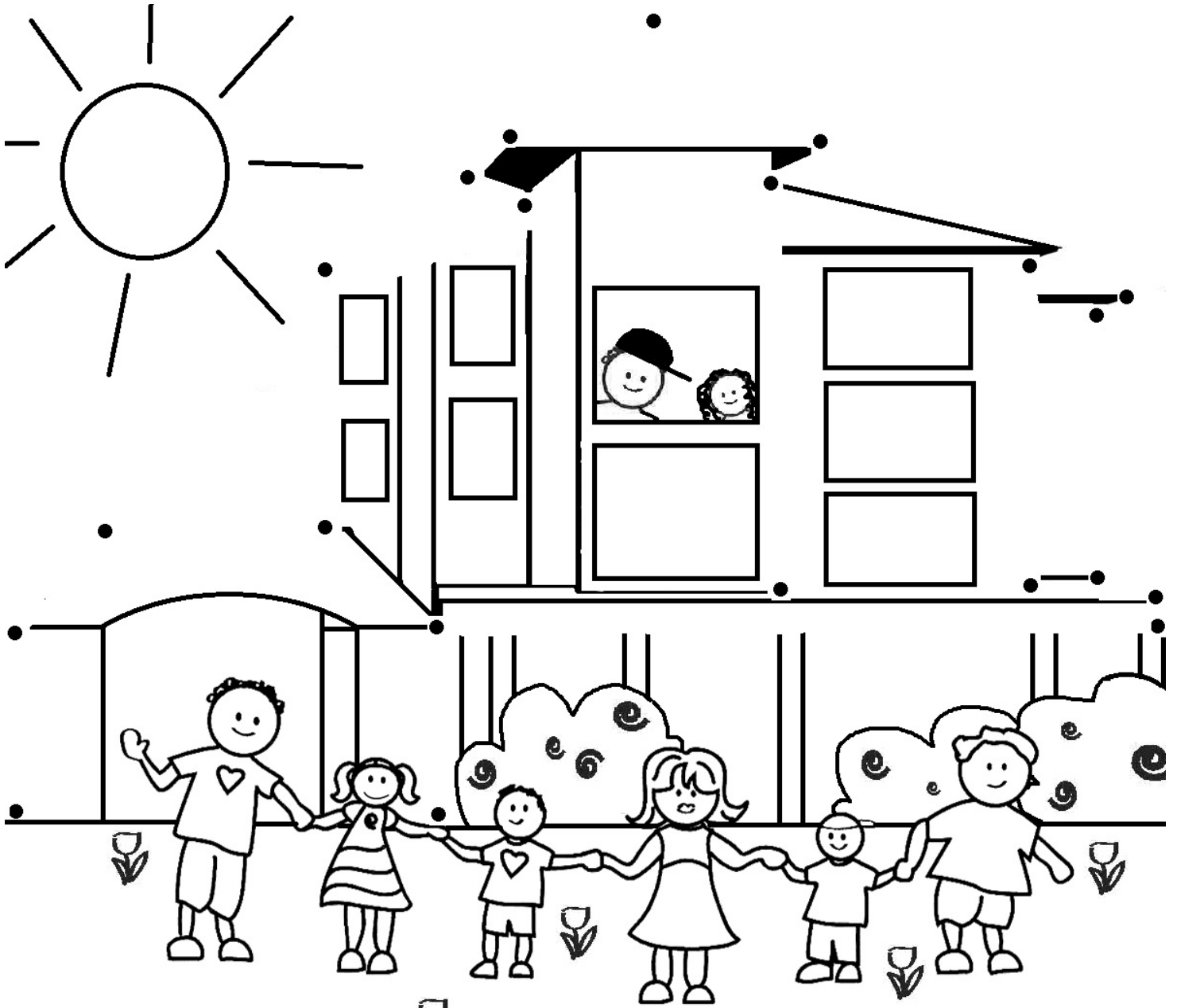
A	★	N	■
B	😊	O	▶
C	⚡	P	↕
D	↓	Q	✕
E	+	R	◆
F	⊘	S	➡
G	▲	T	⬡
H	☾	U	↔
I	↑	V	◯
J	⤿	W	⌘
K	♥	X	↩
L	◀	Y	◈
M	◎	Z	▼

Use the green letters to unscramble a
 BONUS WORD: _ _ _ _ _

Word Scramble

- 1) NDONOTAI _____
- 2) EANSRCAP _____
- 3) NLSANTPART _____
- 4) MNERATAH _____
- 5) TLVNEUORE _____
- 6) RAEHT _____
- 7) IELIALPAHDHP _____
- 8) ELRVI _____
- 9) OIMNUYTM C _____
- 10) ECORAN _____
- 11) IUESTS _____
- 12) ASHD _____
- 13) SULNG _____
- 14) IKENYD _____
- 15) ATFRUGEL _____
- 16) FIMLAY _____
- 17) EAIN TTP _____
- 18) IAETTGRUD _____

Connect the Dots and Color



GIFT OF LIFE FAMILY HOUSE
HELPS FAMILIES ON THEIR
TRANSPLANT JOURNEY

Answers

18)	IAETTGURD	GRATITUDE
17)	EAINTTP	PATIENT
16)	FIMLAY	FAMILY
15)	ATFRUGEL	GRATEFUL
14)	IKENYD	KIDNEY
13)	SULNG	LUNGS
12)	ASHD	DASH
11)	IUESTS	TISSUE
10)	ECORAN	CORNEA
9)	OIMNUVTMC	COMMUNITY
8)	ELRVI	LIVER
7)	IELIAPAHDP	PHILADELPHIA
6)	RAEHT	HEART
5)	TLVNEUORE	VOLUNTEER
4)	MNERATAH	HEARTMAN
3)	NLSANTPART	TRANSPLANT
2)	FANSRCAP	PANCREAS
1)	NDONOTAI	DONATION

Word Scramble

Use the code to finish the sentence

1) Just one organ donor can save up to **EIGHT** lives, and one tissue donor can benefit more than **ONEHUNDRED** others.

2) Gift of Life's region is the **EASTERN** half of PA, southern NJ and DE.

3) In 2011, the Gift of Life **FAMILY** transplant families" opened.

4) Since 1974, Gift of Life has coordinated more than 55,000 organ **TRANSPLANTS** and approximately two million **life-enhancing tissue transplants**.

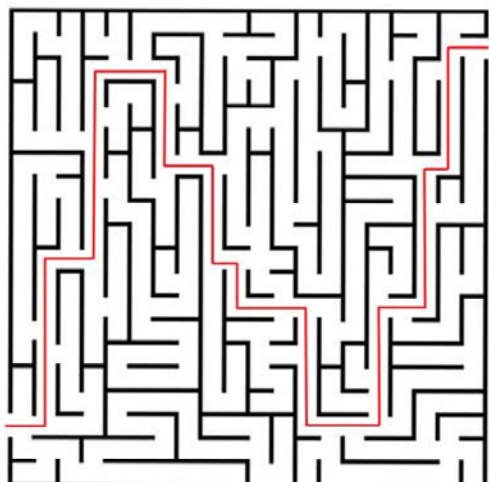
5) There are over 5,000 men, women and **CHILDREN** in our region awaiting a life-saving organ transplant.

Use the green letters to unscramble a BONUS WORD. **HEARTMAN**

Transplant	Heartman	Advocate	Hope
Volunteer	Recipient	Educate	Dash
Family House	Donor Family	Living Donor	Community



Word Search



Maze