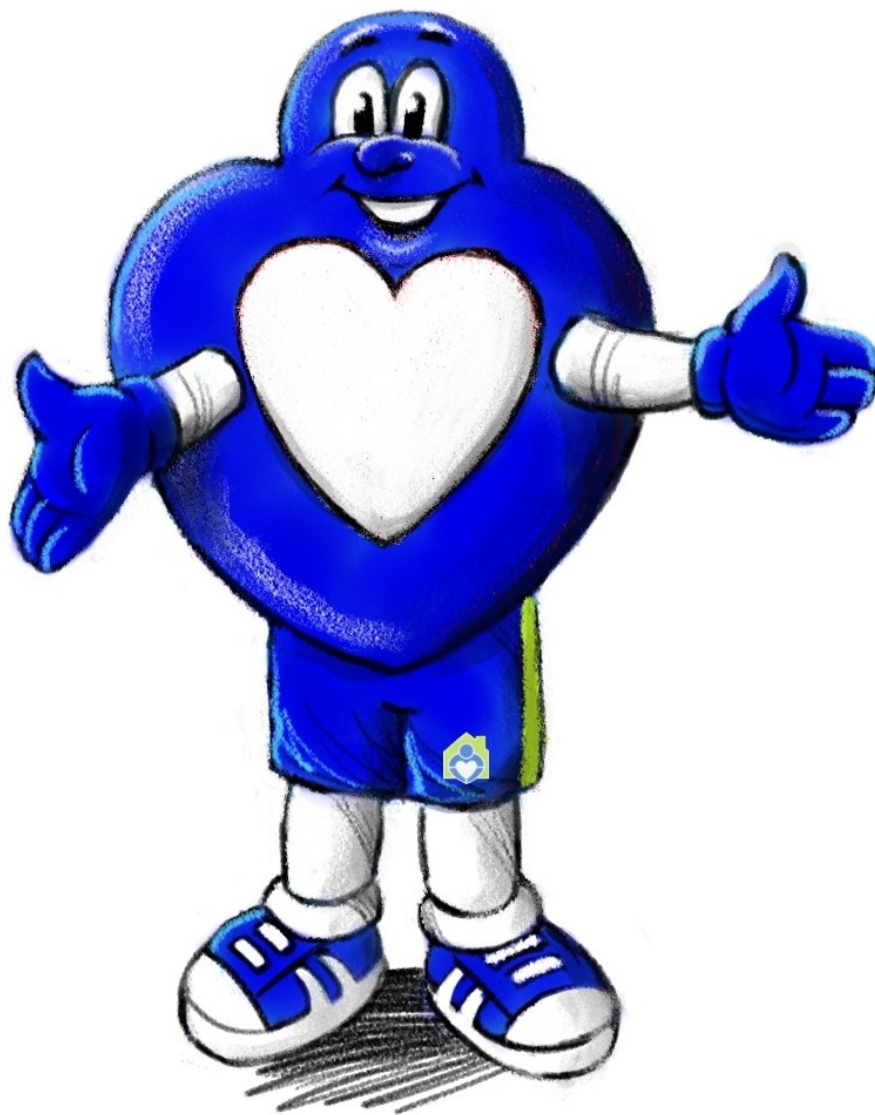


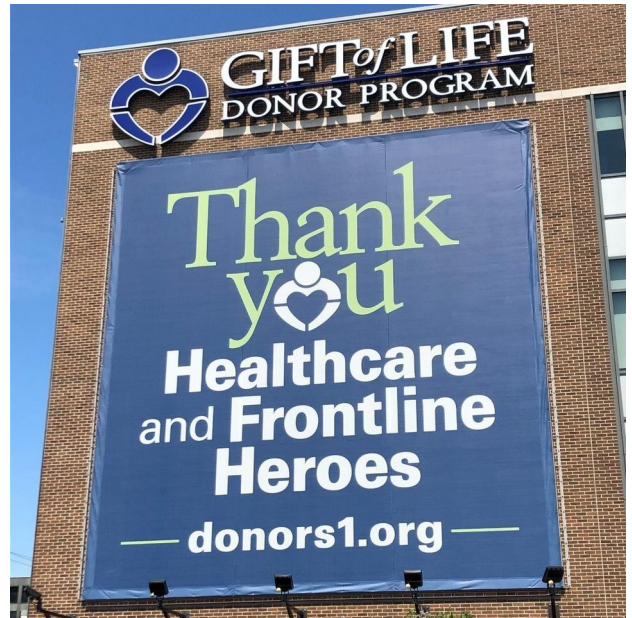


Activity Book



About Gift of Life Donor Program

Gift of Life Donor Program is the non-profit, federally-designated organ procurement organization, working with 128 acute care hospitals and 15 transplant centers to serve 11.3 million people in the eastern half of Pennsylvania, southern New Jersey and Delaware. Thanks to its compassionate community, for the past 13 years, Gift of Life has coordinated the most life-saving organs for transplant in the United States. Its annual donation rate ranks among the highest in the world. Since 1974, Gift of Life has coordinated more than 52,500 life-saving organs for transplant, and approximately 1.75 million tissue transplants have resulted from the generosity of donors and their families. One organ donor can save the lives of up to eight people, and a tissue donor can improve the lives of more than 100 others.



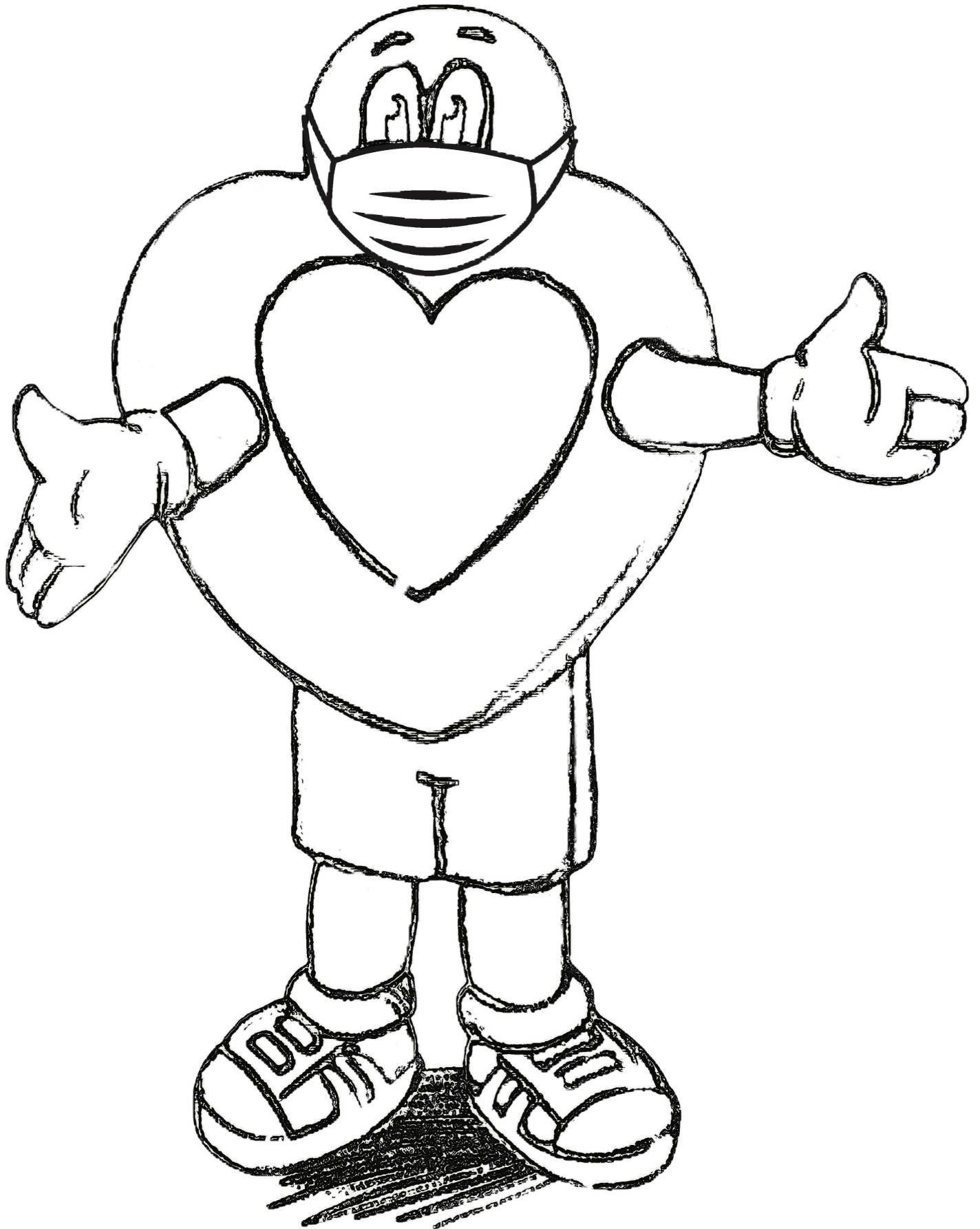
About the Donor Dash

Since 1996, a quarter of a million people have attended the Donor Dash and its life-saving message has reached millions through media and community participation. Our largest fundraiser, all proceeds from the Dash benefit the Transplant Foundation, the charitable foundation that supports programs and activities for donor and recipient families. These include Team Philadelphia's participation at the Donate Life Transplant Games of America and Gift of Life Family House.

The need to educate the public about the importance of registering as an organ and tissue donor is a critical and escalating public health issue. With ongoing advancements in transplantation, the need for organ donation grows. Twenty people die each day in the U.S. waiting for an organ. Currently there are more than 5,000 men, women and children in our region waiting for a life-saving organ transplant and more than 100,000 nationally.



Color Heartman



Word Search

N B H V J I A D T T H H G E D
F K M A H D I D M I O A H W E
R A E V D R P J K E P S J N D
V E M J V O L U N T E E R N O
T R C I B F A D V O C A T E N
R W X I L U A C M X Z H W K O
A Y J D P Y L I X O I X P H R
N U V Z Q I H E D U C A T E F
S U S G B T E O D J M S V A A
P D V X Q N F N U S R L N R M
L A X K B V G S T S C X K T I
A S A J C V S L H G E Y V M L
N H L I V I N G D O N O R A Y
T A B C O M M U N I T Y D N Z
Q K H O N F V V L P X P K D L

Family House

Donor Family

Living Donor

Community

Volunteer

Recipient

Educate

Dash

Transplant

Heartman

Advocate

Hope





GIFT*of* **LIFE**
DONOR PROGRAM

NATION'S MOST **GENEROUS** COMMUNITY

Most Organ Donors Every Year Since 2008

2020

619 *Organ Donors*

2020

1,619 *Organ Transplants*

Gifts of

HEALING

1,385

Musculoskeletal Donors



SIGHT

1,726

Cornea Donors



HOME

4,396

Nights at Gift of Life Family House



108,000+

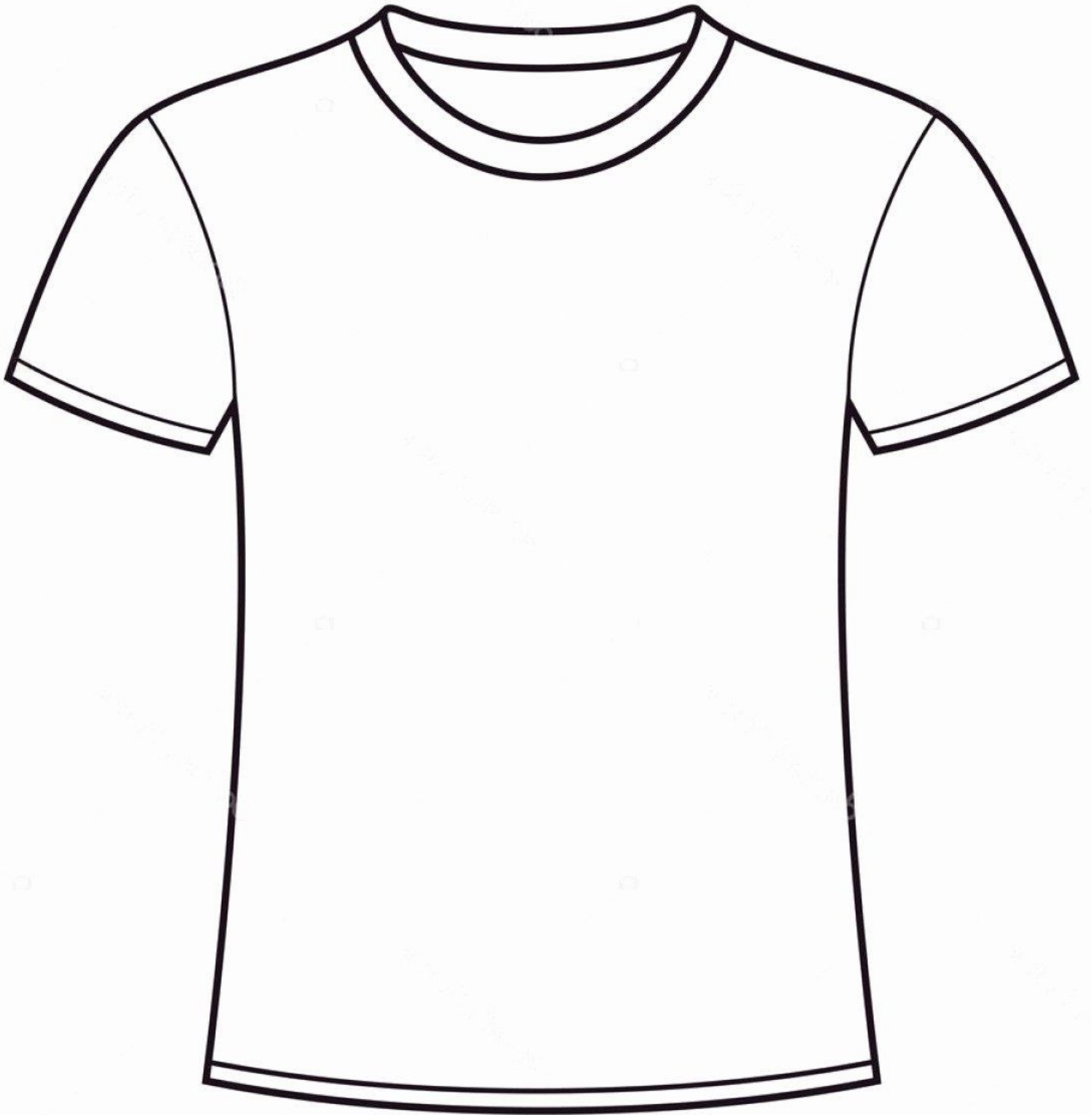
in U.S. waiting for a life-saving transplant.

20 *people die every day.*

Register now.

donors1.org

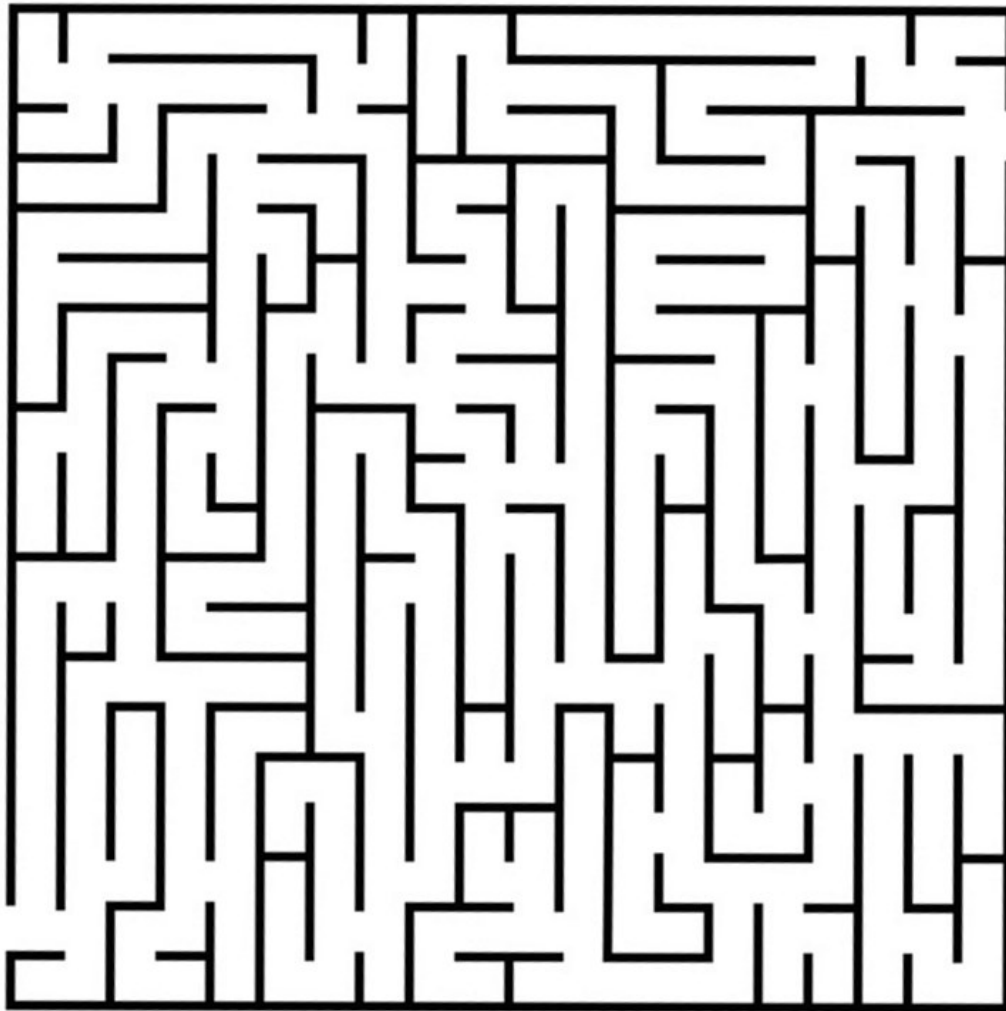
Draw your Dash From Home team t-shirt



Help Heartman get to the Family House



GIFT of LIFE
Family House



Gift of Life Family House serves as a “home away from home” for transplant patients and their families by providing temporary, affordable lodging, and supportive services to those who travel to Philadelphia, Pennsylvania for transplant-related care.

20 SUCCESSES OF 2020

THANKS TO YOU!

Thank you to everyone who helped provide hope, healing and the comforts of home to our guests and the broader transplant community in 2020. Some special accomplishments from last year include:

1



Remained open during the pandemic and made numerous changes to safely continue providing affordable lodging, meals and supportive services for transplant patients and their families

2

Provided 4,396 lodging nights of care to families



3

Installed new ovens in the kitchen for guests and volunteers to use

4

Expanded our dining area into our former living room and installed new flooring to allow for socially distanced meals

5

Began updating and refreshing the guest rooms by installing new carpets, window treatments, custom tv mounts, light fixtures, and bed coverings

6

Created a new webinar series to provide the transplant community with health and wellness information during the pandemic which was attended by over 1,300 participants

7

336 dinners and 46 brunches provided by Home Cook Hero volunteer groups



8

Served 15,038 meals to transplant families at the Family House

9

New milestone reached in April: served the 250,000th meal since opening in 2011



10

Celebrated the Family House's 9th birthday with a special appearance by Bobby Rydell

11

Received 132 yummy baked goods drop-offs



12

45 wish list collections coordinated by volunteers



13

Provided 158 hours of counseling to guests through the Caregiver Lifeline Program



14

Over 140 birthday fundraisers were created on Facebook to help raise funds for the Family House

15

Launched Sponsor-A-Room Program and 8 new guest rooms were sponsored by generous contributors

16

Over \$119,000 raised at the 16th annual Kidney Open Golf Outing



17

New milestone reached in October: provided 70,000 room nights to transplant families since opening



18

12 new Legacy pavers were dedicated with special inscriptions to be placed in the Legacy Garden

19

Over \$40,000 was raised through the 40 Hours for the Family House fundraiser on Giving Tuesday



20

52 total Welcome Home Club members who give monthly to support the Family House

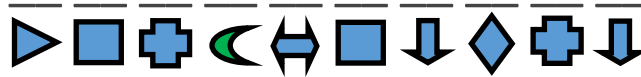
Use the code to finish the sentence

1) Just one organ donor can save up to



_____ lives, and one tissue donor can

benefit more than



others.

2) Gift of Life's region is the



half of PA, southern NJ and DE.

3) In 2011, the Gift of Life



_____ , "A home away from home for



transplant families", opened.

4) Since 1974, Gift of Life has coordinated more than 52,500

organ

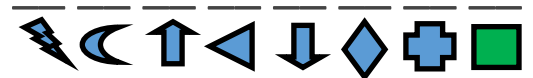


_____ and approximately 1.75

_____ life-enhancing tissue transplants.



5) There are over 5,000 men, women and



in our region awaiting a life-saving organ transplant.

A	★	N	■
B	☺	O	▶
C	⚡	P	↕
D	⬇	Q	✕
E	+	R	◇
F	⊘	S	➡
G	▲	T	⬠
H	☾	U	↔
I	⬆	V	●
J	☾	W	✕
K	♥	X	⬅
L	▲	Y	◇
M	⊘	Z	▼

Use the green letters to unscramble a
BONUS WORD: _____

Word Scramble

1) NDONOTAI _____

2) EANSRCAP _____

3) NLSANTPART _____

4) MNERATAH _____

5) TLVNEUORE _____

6) RAEHT _____

7) IELIALPAHDHP _____

8) ELRVI _____

9) OIMNUYTMC _____

10) ECORAN _____

11) IUESTS _____

12) ASHD _____

13) SULNG _____

14) IKENYD _____

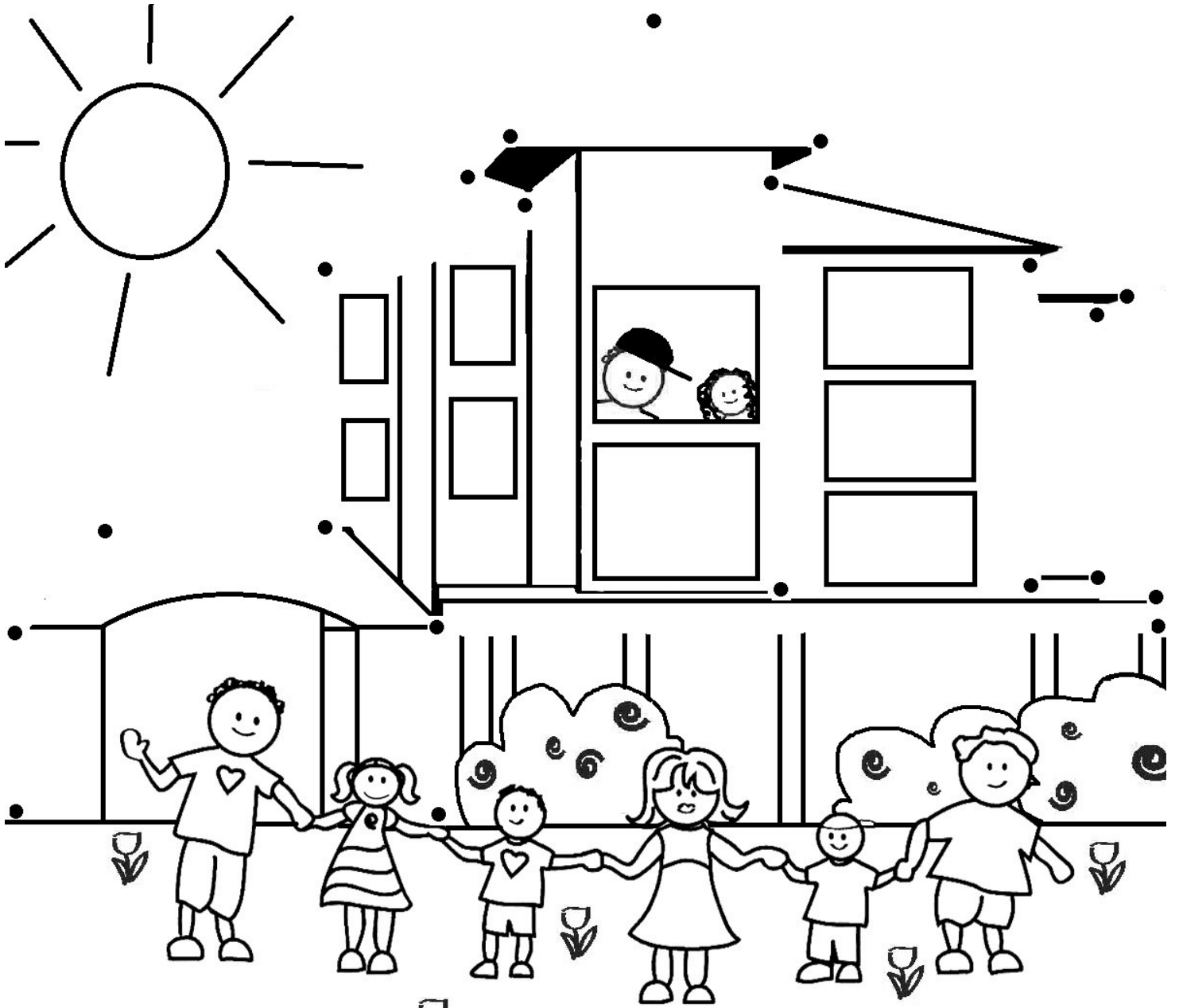
15) ATRUGEL _____

16) FIMLAY _____

17) EAINTP _____

18) IAETTGRUD _____

Connect the Dots and Color



GIFT OF LIFE FAMILY HOUSE
HELPS FAMILIES ON THEIR
TRANSPLANT JOURNEY

Answers

- 1) NDONOTAI DONATION
- 2) EANSRCAP PANCREAS
- 3) NLSANTPART TRANSPLANT
- 4) MNERATAH HEARTMAN
- 5) TLVNEUORE VOLUNTEER
- 6) RAHT HEART
- 7) IELIAPAHDPH PHILADELPHIA
- 8) ERVI LIVER
- 9) QIMINYTMC COMMUNITY
- 10) ECORAN CORNEA
- 11) IUESTS TISSUE
- 12) ASHD DASH
- 13) SULNG LUNGS
- 14) IKENDY KIDNEY
- 15) ATRUGEL GRATEFUL
- 16) FIMLAY FAMILY
- 17) EAINTP PATIENT
- 18) IAGTRUD GRATITUDE

Word Scramble

Use the code to finish the sentence

1) Just one organ donor can save up to **EIGHT** lives, and one tissue donor can benefit more than **ONEHUNDRED** others.

2) Gift of Life's region is the **EASTERN** half of PA, southern NJ and DE.

3) In 2011, the Gift of Life **FAMILY** "HOME" "A home away from home for transplant families" opened.

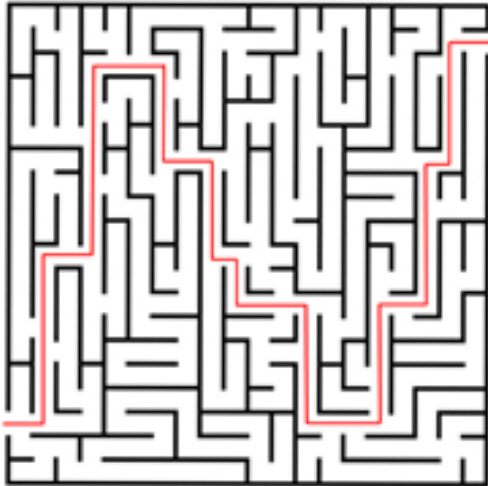
4) Since 1974, Gift of Life has coordinated more than 52,500 **TRANSPLANTS** and approximately 1.75 million life-enhancing tissue transplants.

5) There are over 5,000 men, women and **CHILDREN** in our region awaiting a life-saving organ transplant.

Use the green letters to unscramble a BONUS WORD **HEARTMAN**

Code Sheet

- | | | | |
|--------------|--------------|----------|------------|
| Family House | Donor Family | Heartman | Transplant |
| Volunteer | Recipient | Advocate | |
| Community | Living Donor | Educate | |
| | | Hope | |



Maze



Word Search